

Oklahoma GI Council

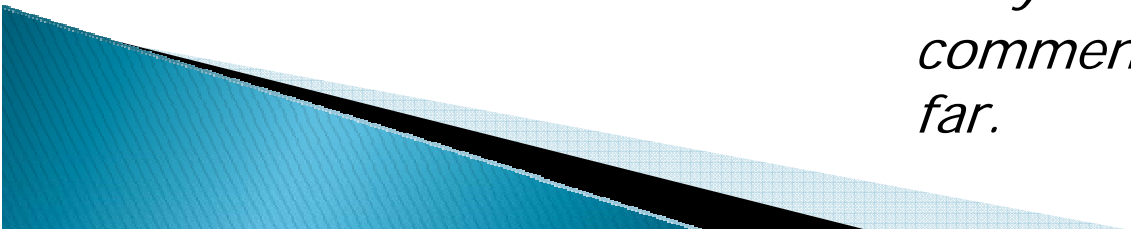
Address Standards

April 5, 2013

OK Address Standards Workgroup

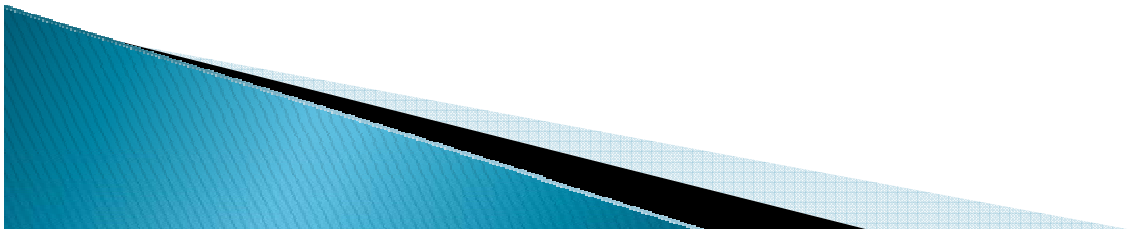
- ▶ Mike Sharp – Office of Geographic Information
- ▶ Shellie Willoughby – Office of Geographic Information
- ▶ Troy Frazier – Oklahoma Tax Commission
- ▶ Kathy Hines – OU Center for Spatial Analysis
- ▶ Brenda Fennel – Choctaw Nation
- ▶ Joel Foster – Association of Central Oklahoma Governments (ACOG)
- ▶ Sohail Hasanjee – ONEOK
- ▶ Craig Moody – Oklahoma Department of Transportation
- ▶ Wade Patterson – Garfield County Assessor
- ▶ Charles Brady III – City of Ardmore

Many others have reviewed & commented during the process so far.

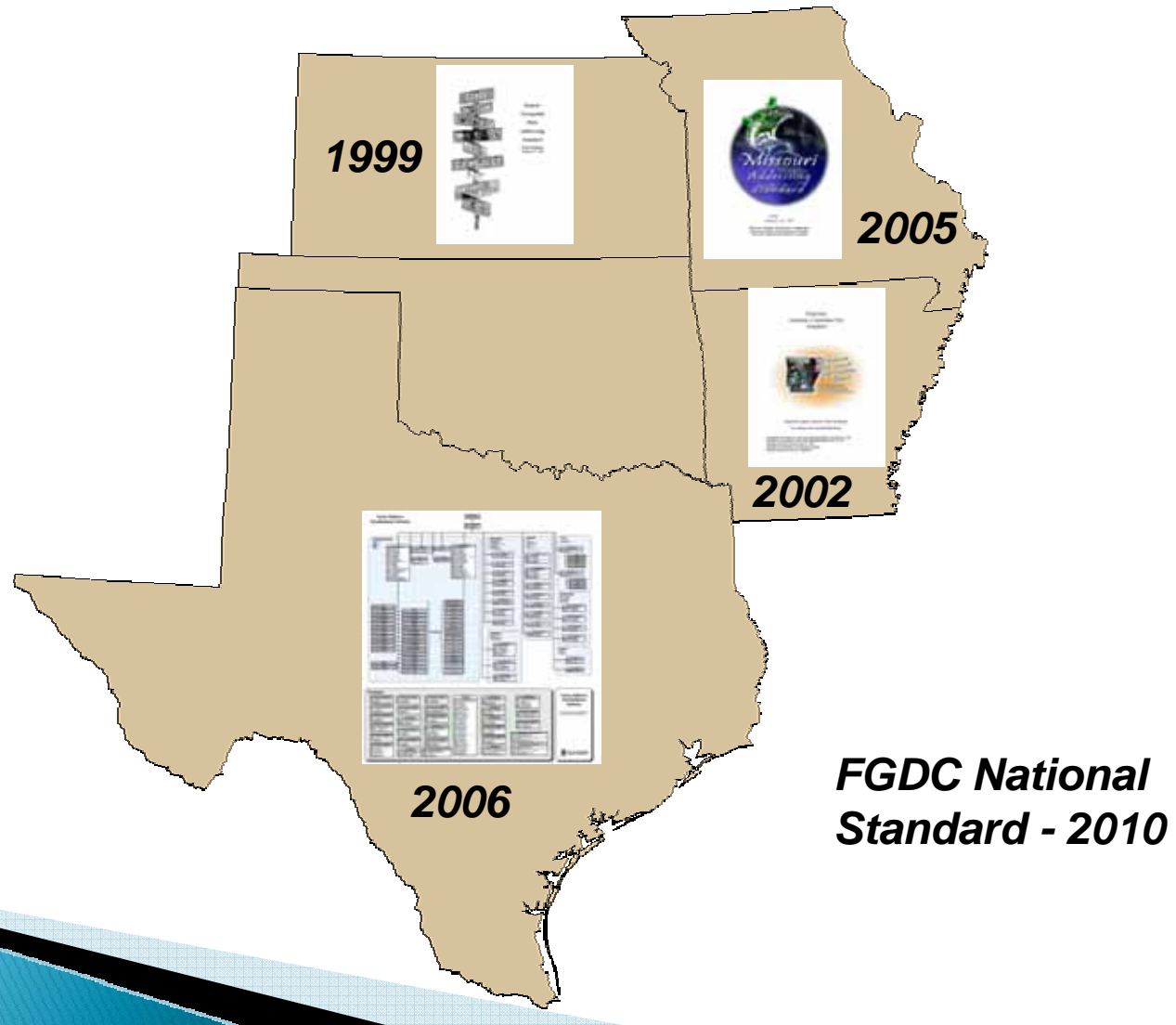


Existing Issues

- No accepted published standard in the state
- Diverse development
- Data compatibility issues
- Limited usability
- Redundant expenses
- Difficulty in displaying datasets across jurisdictions
- Interpretations of terms doesn't translate well between users.
- Data security / availability

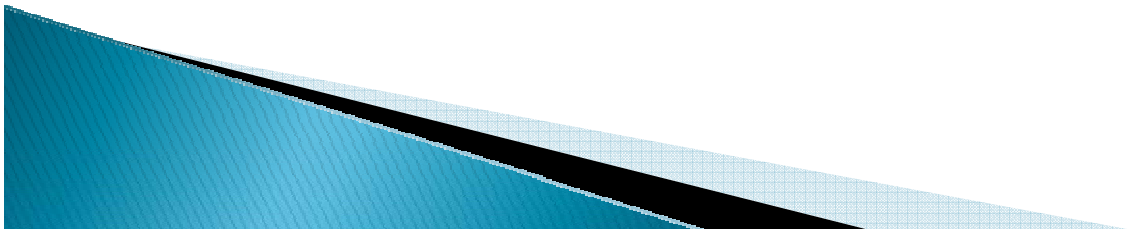


Published Standards



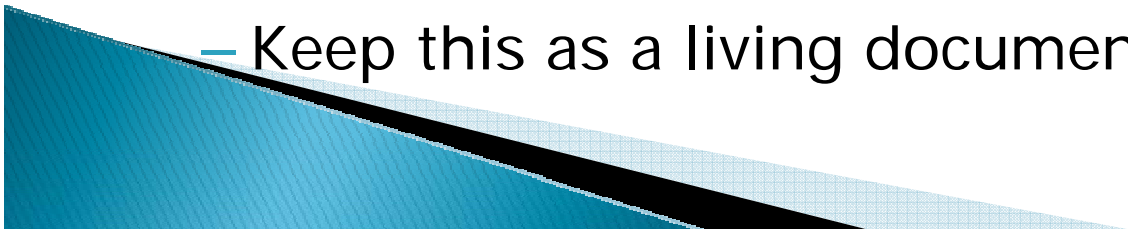
Current Status

- ▶ Multiple datasets exist with quality data
- ▶ The data currently works for the agencies that developed it.
- ▶ An established cohesive willing GIS community exists in Oklahoma
- ▶ A growing need of a statewide GIS address standard from other agencies that utilize GIS
- ▶ Previously stated need from GIS community



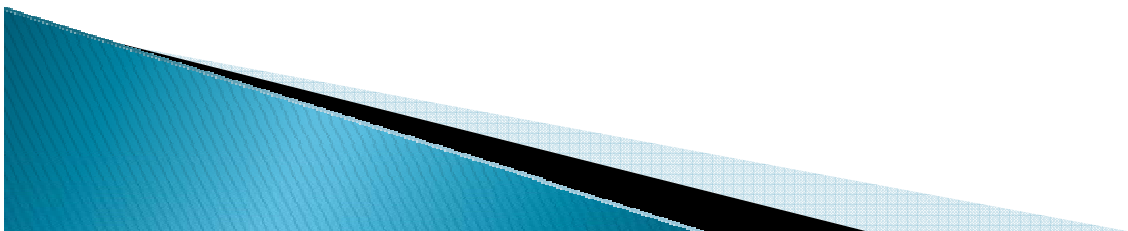
Goals

- Determine critical components of point & centerline datasets to provide addressing capabilities
- Define values for pull down menus, cite sources, determine stewards.
- Comply with existing standards (FGDC, Postal, NENA)
- Publish an address standard
 - Provide an address standard to non GIS users
 - Provide a data schema to the GIS community
 - Keep this as a living document



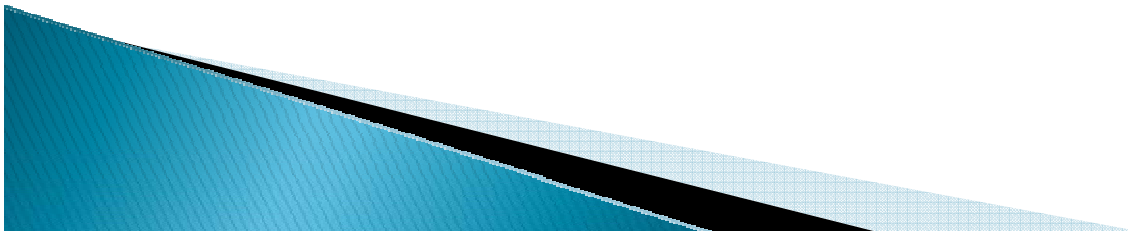
Implementation

The adoption and use of this standard is voluntary. However, publication of geospatial data by “State agencies, boards, commissions and public trusts having the State of Oklahoma as a beneficiary” pursuant to Title 62, Section 34.11.5 of the Oklahoma Statutes may have to comply with this standard.

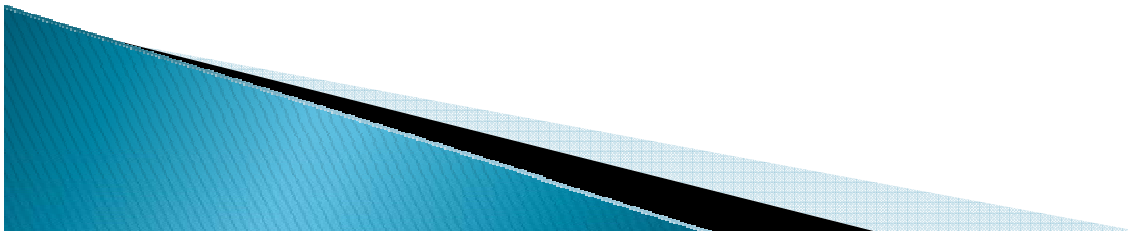


Data Sources & Authorities

- ▶ City
- ▶ County
- ▶ E911
- ▶ COG
- ▶ State Agencies
- ▶ NENA/OKLANENA, URISA, FGDC, USPS



Discussion & Data Issues



Acronyms

- ▶ **NENA** – National Emergency Number Association
 - ▶ **URISA** – Urban and Regional Information Systems Association
 - ▶ **FGDC** – Federal Geographic Data Committee
 - ▶ **ANI/ALI** – Automatic Number Identification /Automatic Location Identification
 - ▶ **MSAG** – Master Street Address Guide
 - ▶ **PSAP** – Public Service Access Point
 - ▶ **ESN** – Emergency Service Network
 - ▶ **Next Gen 911** – 911 with video, text, images
 - ▶ **Phase I & II 911** – Wireless calls information & location data
 - ▶ **VoIP** – Voice Over Internet Protocol
- 