



FUNDING OPPORTUNITIES

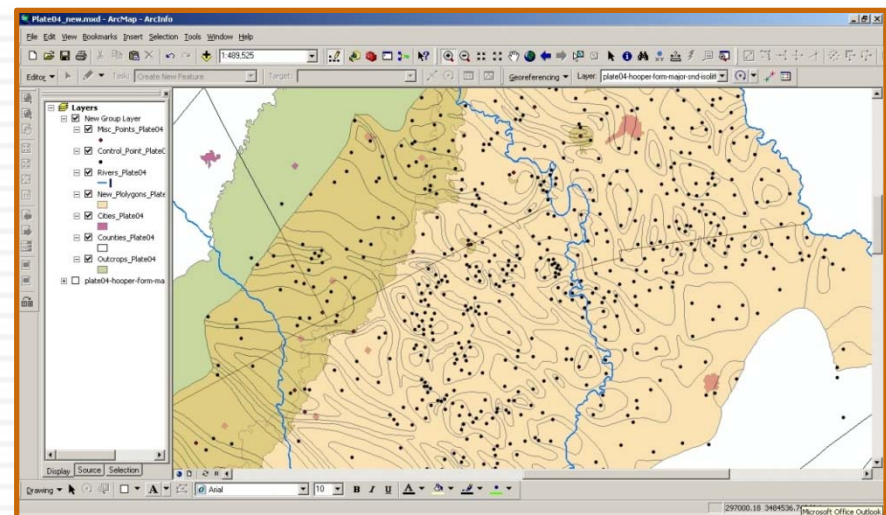
April Chipman, GISP - Oklahoma State University
Christina Hall - AAPG Datapages

Program Overview

- Partnership between American Association of Petroleum Geologists (AAPG) Foundation and Oklahoma State University
- Funded by the Boone Pickens Digital Geology Fund (\$240,000/year)
 - 80% for *cartographic* projects
 - 20% for *research* projects at OSU
- Mission: Create new GIS content

Types of Projects

- Direct application to the search for and development of petroleum and energy-related mineral resources
- Related to environmental geology or related economic issues
- Strong GIS component



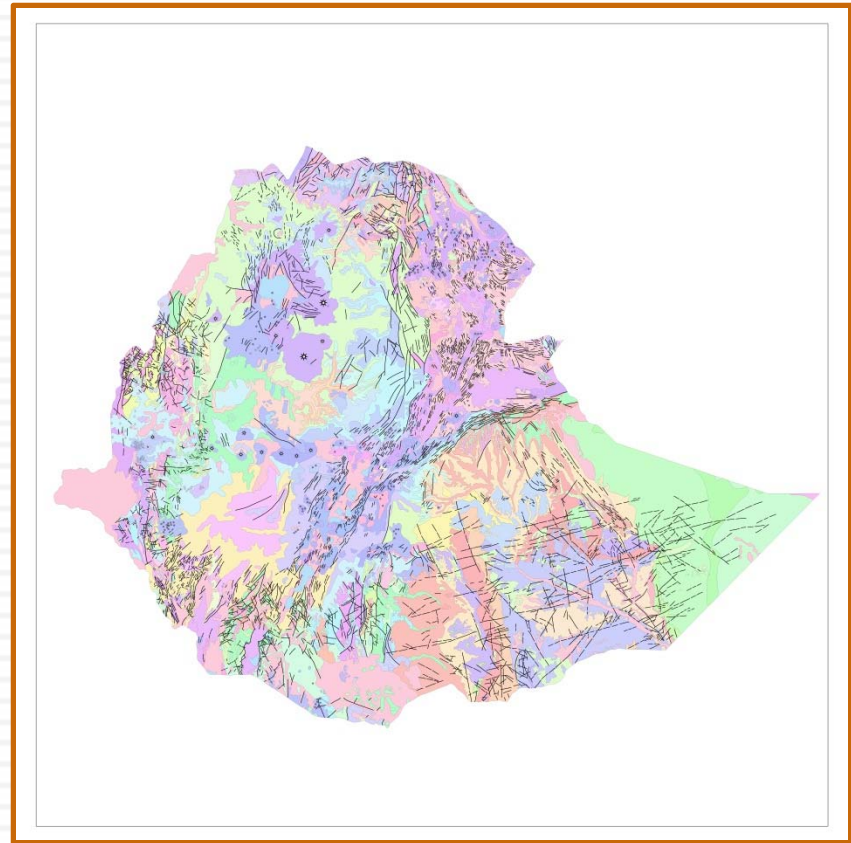
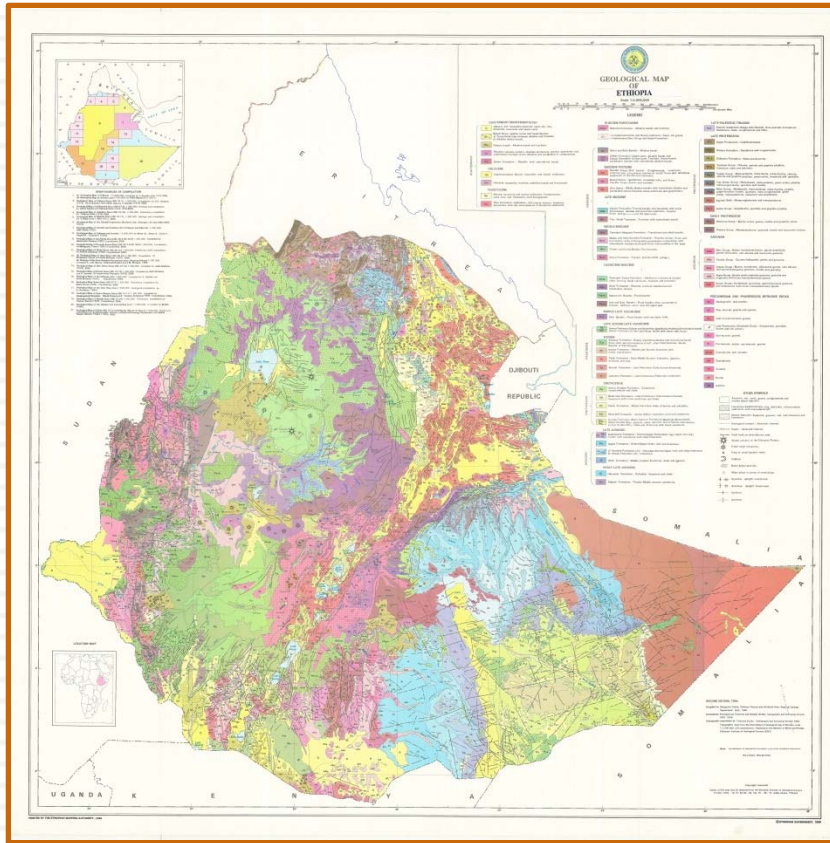
Wilcox Group and Carrizo Sand in East-Central Texas - In Progress

How the Program Works



- Projects are proposed by Principal Investigator(s)
- Projects are approved by the Consortium Advisory Committee and the AAPG Foundation Trustees
- Work is completed by OSU Cartography Services, via student employees
- Completed project is peer reviewed by selected members of the Consortium
- Corrections are made
- Project is posted on the AAPG Datapages website

Project Example: Ethiopia



Project Example: Nevada Wells

API	COUNTY	PERMIT	OPERATOR	WELL	SECTION	TOWNSHIP	RANGE	PARTSECT	DISTFROMLI	UTM N	UTM E	LEVEL ACCURACY	PERMIT_ISS	COMPL_DATE	STATUS	TD	ELEVATION	TOPS	AL_BOT	TESTS
27-001-05049	Churchill	49	Drilling	A	28	18N	29E	SE/4 NE/4 NE/4	1200 N 425 E	4362266.6	351377.4	4	24-Jan-57	9-Nov-56	A	506	3,928		99999	
27-001-05041	Churchill	52	Drilling	1	28	18N	29E	NE/4 SE/4 NE/4	1910' N, 453' E	4362050.1	351365.8	4	24-Jan-57	1961	A	231	3,927		99999	
27-001-05043	Churchill	58	Lands, Inc.	11	18	17N	29E	NW/4 SW/4 SW/4 1	1020 S, 410 W	4354921.3	346619.5	4	21-Aug-57	1962	A	417	3,920		99999	
27-001-05043	Churchill	55	Lands, Inc.	Helen No. 1	18	17N	29E	NW/4 NW/4 NW/4	189 N, 137 W	4356176.5	346570.1	4	11-May-57	00 SEP 61	A	400	4,100	Quaternary	99999	
27-001-05044	Churchill	0	Union Oil	No. 1	24	19N	26E	SE/4 NW/4		4373830.8	326624.2	3			A	650	4,100		99999	
27-001-05045	Churchill	0	& Gas Co.	No. 1	5	18N	31E	NW/4 NW/4 NW/4	200' N, 150' W	4368774.6	367831.0	4	00 JUL 19	1921	P & A	1,327	3,940		99999	
27-001-05046	Churchill	0	& Gas Co.	No. 2	5	18N	31E	SE/4 SE/4 SE/4		4367221.1	369267.0	3	1920	1921	P & A	705	3,940		99999	
27-001-05047	Churchill	0	& Gas Co.	No. 1-A	6	19N	31E	E/2 NE/4 NE/4		4378359.1	367836.0	3	1921	1921	P & A	400	3,937		99999	
27-001-05048	Churchill	0	& Gas Co.	No. 2-A	6	18N	31E	NE/4 NE/4 NE/4		4368733.0	367686.3	3	1921	1921	D & A	1,300	3,937		99999	
27-001-05049	Churchill	0	Extension	No. 1	22	19N	28E	C NE/4 SE/4		4373058.8	343458.9	3	1921	1922	A	1,076	3,937		99999	
27-001-05050	Churchill	0	Oil Co.	No. 1	34	18N	31E	NE/4 NE/4 NW/4		4360535.6	371570.7									
27-001-05051	Churchill	0	Co.	No. 1	3	20N	32E	NW/4 NW/4 SE/4		4387022.5	381893.8									
27-001-05052	Churchill	0	Nevada Oil	No. 1	16	20N	32E	SW/4 SW/4 NE/4		4383891.2	380235.5									
27-001-05053	Churchill	0	Hart, E.W.	No. 1	20	19N	31E	NW/4 SW/4		4372688.9	368053.5									
27-001-05054	Churchill	0	Co.	No. 1	32	19N	31E	SW/4 SW/4	200' S, 350' W	4368898.7	367898.7									
27-001-05056	Churchill	0	Oil	No. 1	20	18N	31E	NE/4 NE/4 SW/4		4363014.2	368385.1									
27-001-05061	Churchill	72	Thorpe, H.B.	No. 1	19	22N	30E	C SE/4 NW/4	1980' N, 1980' W	4402452.7	358214.3									
27-001-05062	Churchill	161	Oil Co.	Amoco-S.P.	33	24N	33E	C NW/4	660 N, 660 W	4418518.8	390248.7									
27-001-05063	Churchill	181	Michael T.	1	14	17N	28E		660 S, 1650 W	4354863.7	343744.3									
27-001-05064	Churchill	351	Ltd.	Ernst No. 1	21	18N	29E	SW/4 SW/4	500 S, 1100 W	4362757.2	350221.3									
27-001-05063	Churchill	416	Ltd.	No. 1	34	15N	34E	NW/4 NW/4	950 N, 790 W	4331473.4	401305.6									
27-001-05066	Churchill	417	Ltd.	No. 2	34	15N	34E	NE/4 NW/4	350 N, 2100 W	4331649.8	401704.4									
27-001-05067	Churchill	418	Ltd.	No. 3	27	15N	34E	C SE/4 SE/4 SE/4	330 S, 330 E	4331844.7	402554.4									
27-001-05068	Churchill	561	Terry F.	Federal No.	36	18N	30E	SE/4 SE/4	660 S, 900 E	4359346.7	365761.5									
27-001-90010	Churchill	166	Co.	No. 1	1	22N	26E	SW/4 SE/4	746 S, 1349 E	4406992.0	328266.2									
27-003-04000	Clark	0	Oil Co.	No. 1	11	21S	59E			4000260.3	649250.2									
27-003-04001	Clark	0	Associates	Gail No. 1	7	20S	65E	SW/4 NW/4		4011150.9	700122.6									
27-003-04003	Clark	0	Uranium	Fee No. 1	29	13S	66E	C NE/4		4073104.1	712052.2									
27-003-04994	Clark	0	Oil Co.	No. 1	26	24S	58E	SW/4 NE/4		3966392.6	641147.5									



University of Nevada, Reno

Blog/RSS | Shop | FTP | Contact | Home

Custom Search

Search

General Geology

Geohazards

Minerals & Energy

Science Education

Research

Geologic Mapping

Publication Sales

Home

About NBMG

Staff Directory

Departments/Labs

Publications

Current Projects

Mapping

Data/Imagery/Indexes

Photos & Graphics

Presentation Archive

Collections

Calendar/Events

Resources/Links

For Authors

NBMG Open-File Report 11-6
Also available on portable hard drive, 105 GB, 9643 files
Oil and Gas Well Information for Nevada—2011 Update
Compiled by Ronald H. Hess¹, Martha A. Henson¹, David A. Davis¹, Samuel H. Limerick², Siewe Siewe Siewe³, and Mary Niles³
¹Nevada Bureau of Mines and Geology; ²Consultant; ³Oklahoma State University
This is a compilation of oil and gas well permits, completion reports, electric logs, mud logs, sundry reports, and production data housed at NBMG. Also included in this compilation are most of the petroleum-related bulletins, reports, and maps produced by NBMG.

This update includes all oil and gas well files that have been scanned by NBMG over the last five years. They are in a variety of formats such as PDF, TIFF, JPEG, and software-specific formats and are provided in the format which they were scanned. Some files are duplicated in different formats. Many of these files, especially the log files, are very large. For example, some of the full-color log files in TIFF format are several hundred megabytes in size. You may need special viewing software for some of these files.

This update includes a major scanning project, just completed, by the AAPG-OSU GIS Consortium (<http://www.datapages.com/Partners/AAPGOSUConsortium.aspx>). It was funded by OSU alumni Boone Pickens. It included the scanning of all of the oil and gas well files that had not yet been converted to an electronic format. This included over half of the paper oil and gas well records housed at NBMG. The brunt of this scanning effort was performed by two OSU students and employees of OSU Cartography Services: Siewe Siewe Siewe (PHD candidate) and Mary Niles (BS Geology student).

Links to the API numbers on the lists below go to directories containing various scanned logs and other documents associated with each well. The digital files may not be complete for each well and are provided in the same format as provided by OSU, well operator, or vendor. The well data on these tables are current to August 29, 2011.

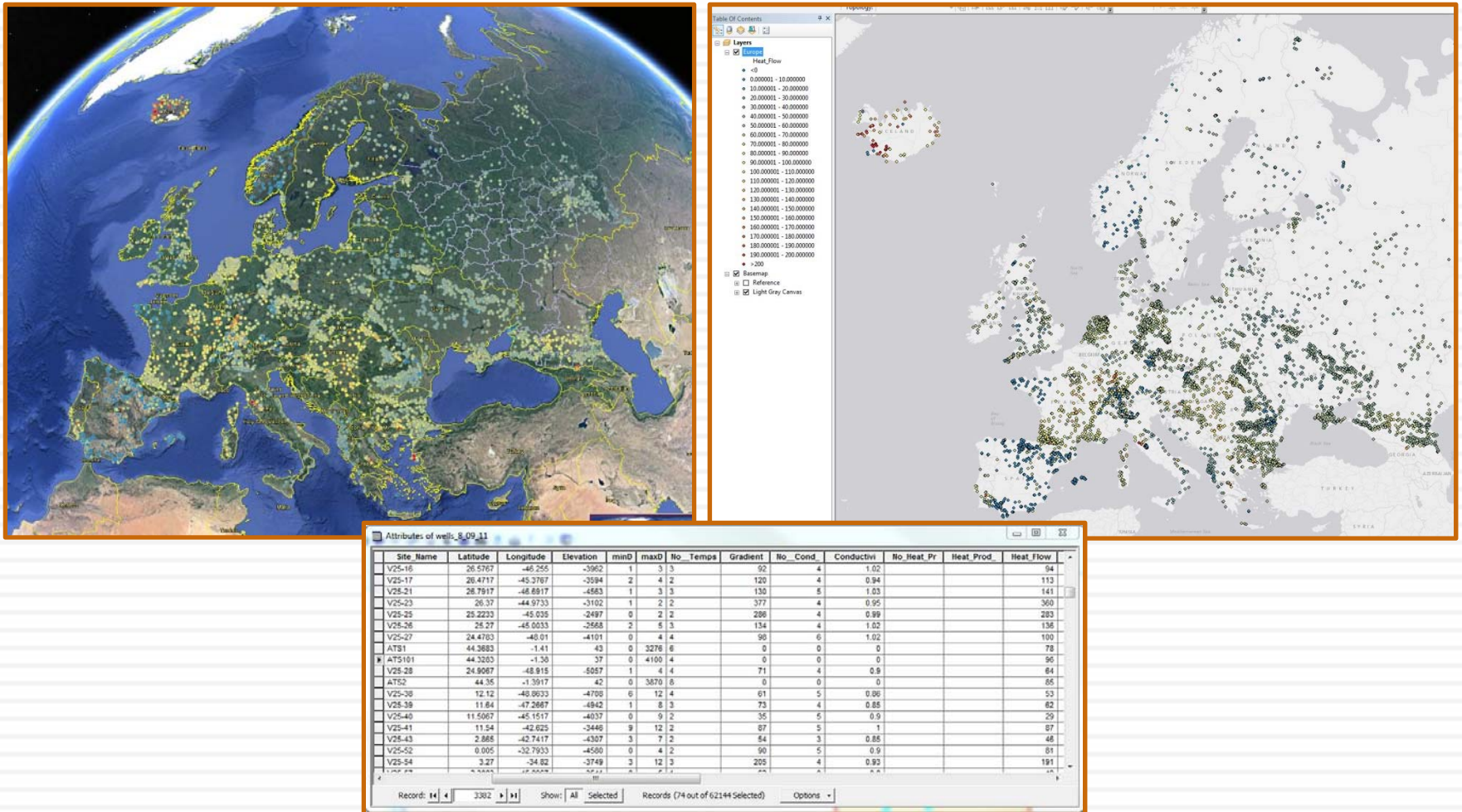
[Wells listed by increasing township, range, and section](#)
[Wells listed by State permit number](#)
[Wells listed alphabetically by operator and well name](#)
[Wells listed by API number](#)

[Description of information and abbreviations \(.pdf\) used in the above lists](#)

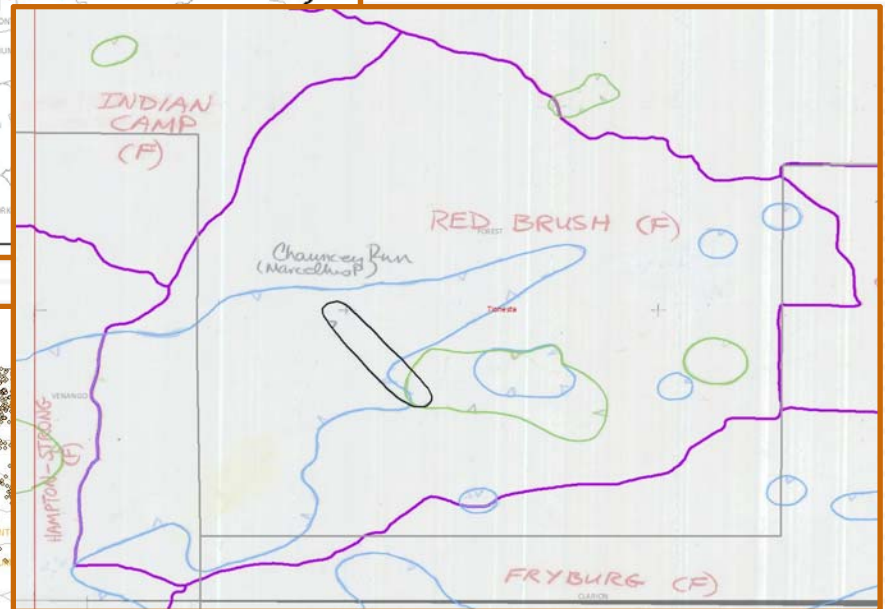
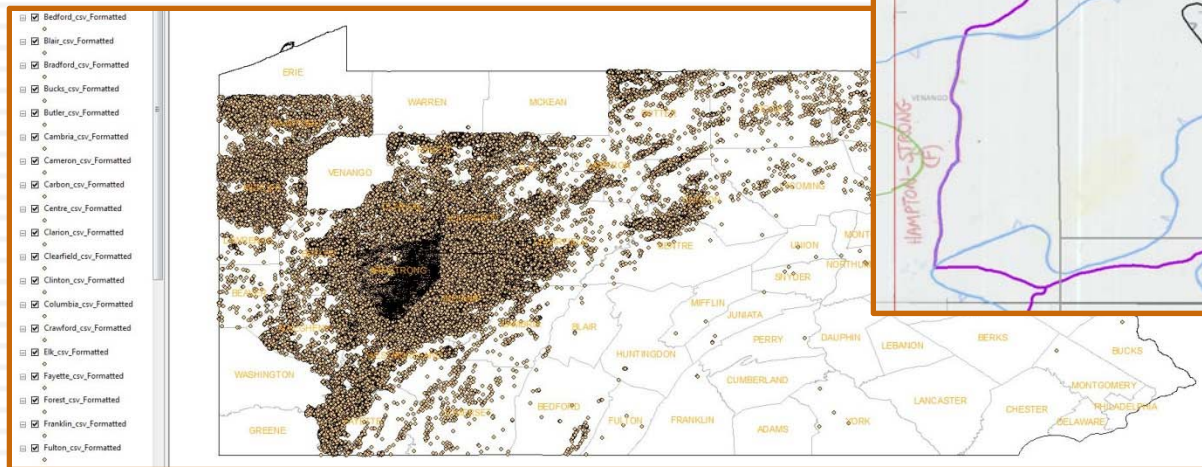
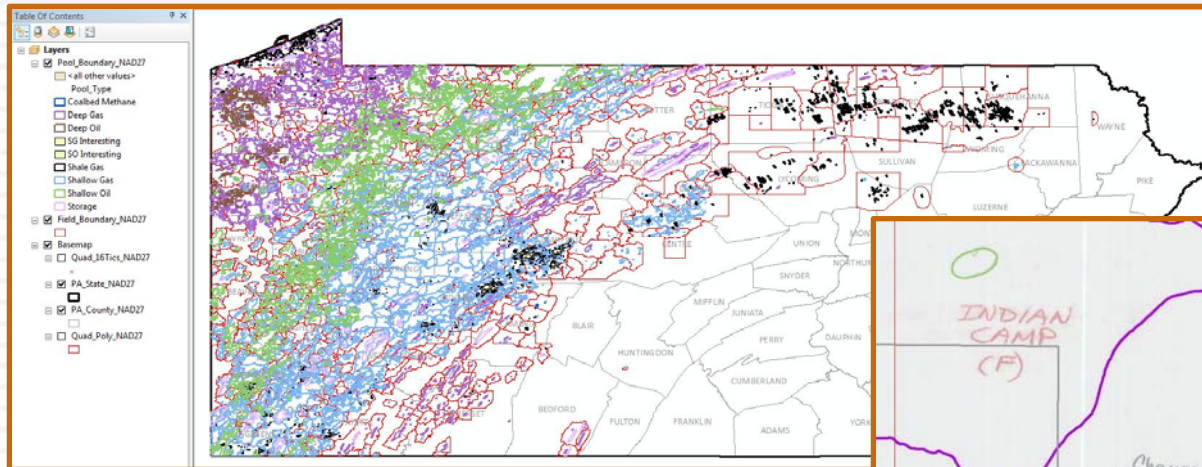
Other NBMG information and reports:

[Petroleum Data Map of Nevada, 2007, NBMG Map 162 plate - GIS dataset in a zipfile, 119 Mb.](#)

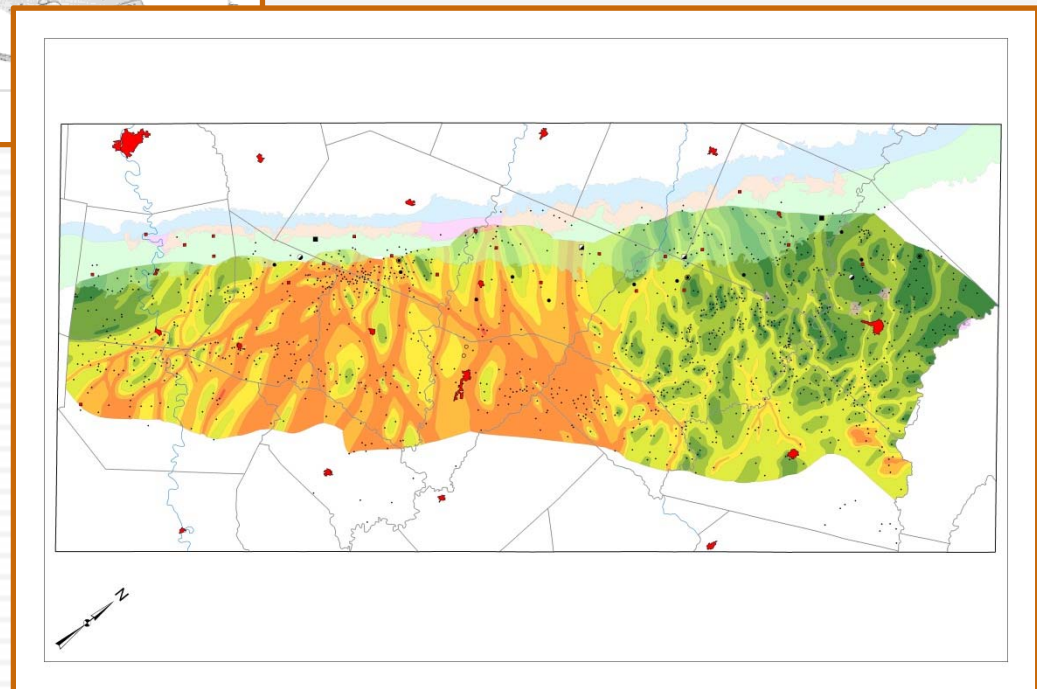
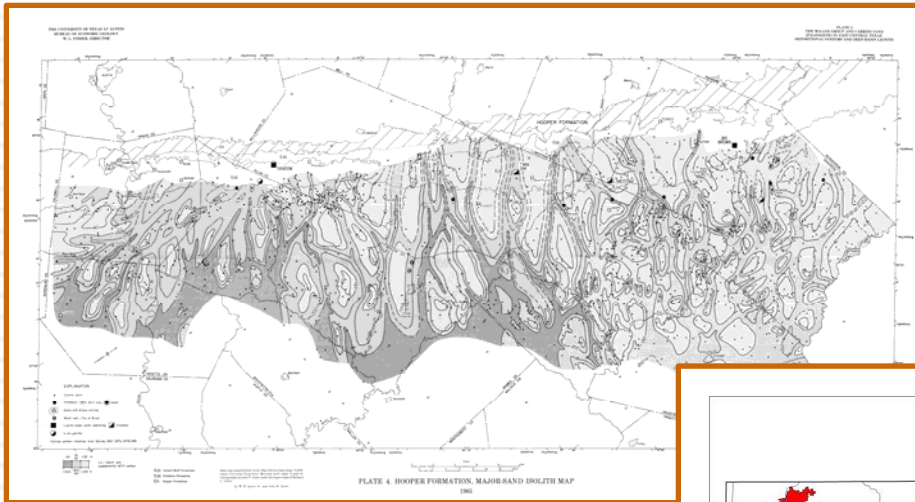
Project Example: Global Heat Flow



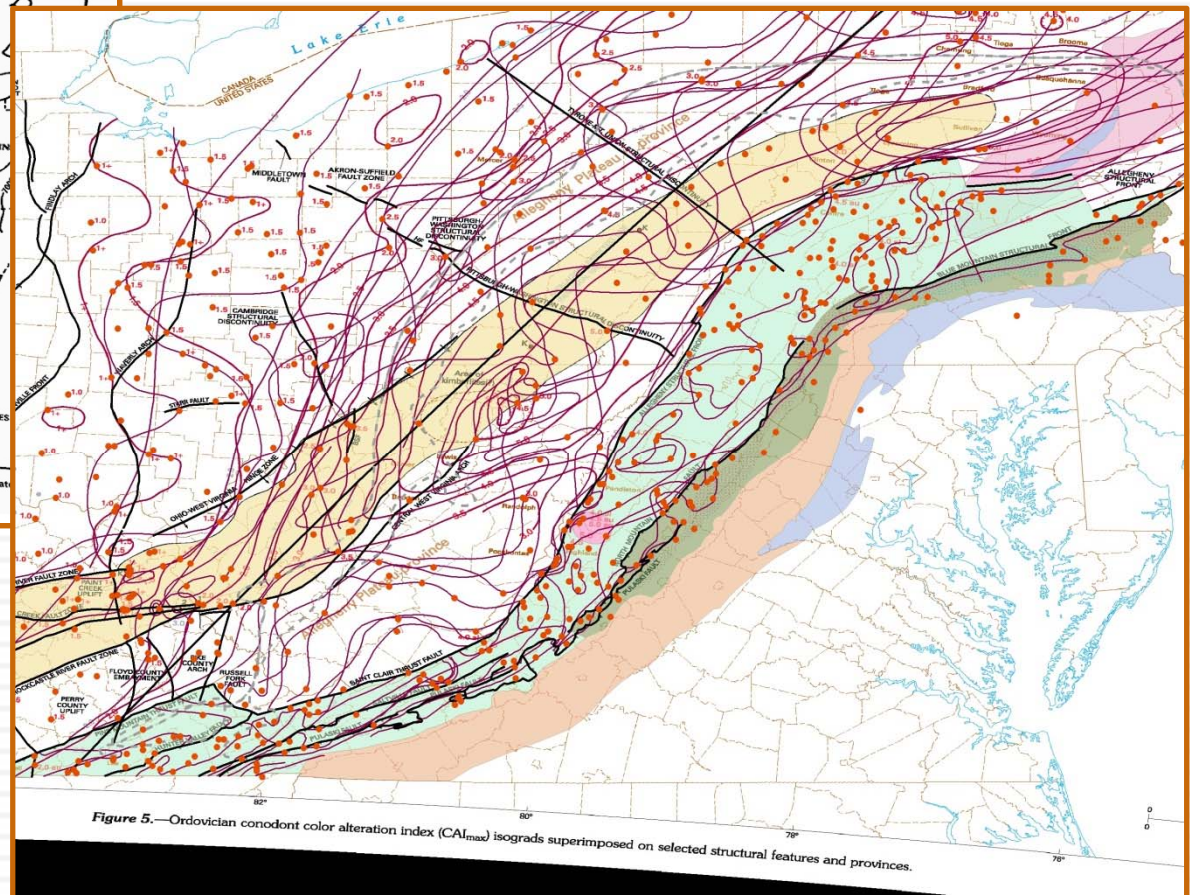
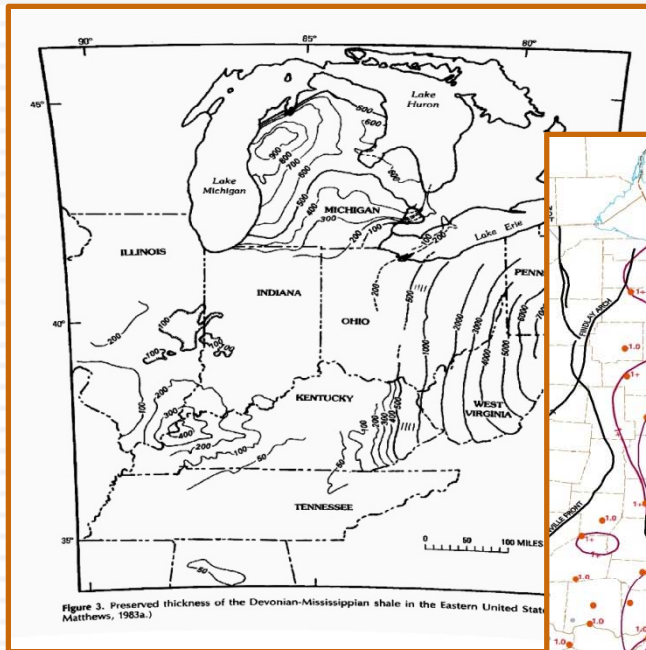
Project Example: PA Oil and Gas



Project Example: BEG Wilcox

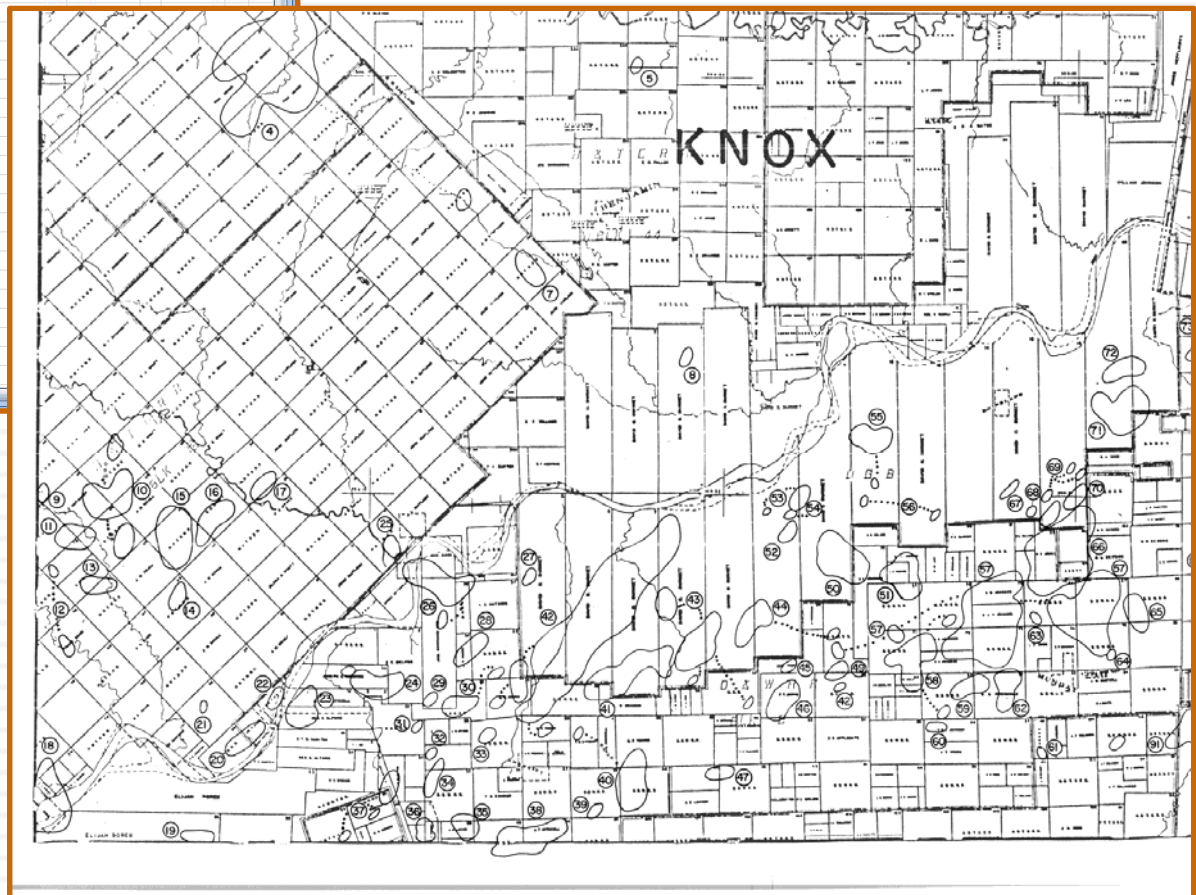


Project Example: Appalachian Shales



Project Example: Abilene

1	County	Rock Type	Map No.	Field Name	Disc Date	Thous BBLs	MMCF Gas	Form Name	Lit	No. Wells	I/A
2	Knox	Bend	1	Aurelia	Nov-83	11		5 Cong	C	1	I
3	Knox	Bend	2	Truscott (Bend Conglomerate)	Apr-53	40		Cong	C	3	I
4	Knox	Bend	3	Truscott, SW. (Atoka)	Jan-76	364		370 Atok	C	7	A
5	Knox	Bend	4	Fant (Congl., Lo.)	Jun-80	4132					
6	Knox	Strawn	5	Benjamin (Penn.)	Sep-50	2					
7	Knox	Bend	6	Beavers (Congl. 5850)	Sep-70	9					
8	Knox	Bend	7	Benjamin, W. (Marble Falls)	Dec-63	285					
9	Knox	Strawn	8	Benjamin, South (Strawn)	Apr-53	4					
10	Knox	Strawn	9	Buzzard Peak (Strawn)	Oct-52	11					
11	Knox	Wolfcamp	10	Little Giant (Tannehill)	Nov-70	453					
12	Knox	Wolfcamp	11	Two Tee (Tannehill)	Aug-58	800					
13	Knox	Strawn	12	Knox City, West (Strawn)	Jan-53	336					
14	Knox	Strawn	13	R. P. (Strawn)	Nov-83	6					
15	Knox	Wolfcamp	14	Mayme-Tee (Tannehill)	Mar-80	44					
16	Knox	Wolfcamp	15	Hailey (Tannehill)	May-76	1842					
17	Knox	Wolfcamp	16	Benjamin, SW. (Tannehill Sd)	Nov-53	632					
18	Knox	Wolfcamp	17	Henry-Hamilton (Tannehill)	Jun-67	45					
19	Knox	Strawn	18	Katz (See Stonewell County)							
20	Knox	Strawn	19	Bush (Strawn, Upper)	Feb-53	55					
21	Knox	Wolfcamp	20	J. E. K. (Tannehill)	Jul-57	9					
22	Knox	Strawn	20	J. E. K. (Strawn)	Jul-59	286					
23	Knox	Wolfcamp	21	FEW (Tannehill)	May-57	12					
24	Knox	Wolfcamp	22	Lime-E (Tannehill)	Jul-84	2					



Contact Information



➤ How to Apply

- Proposal criteria & templates on website
- www.datapages.com/Partners/AAPGOSUConsortium.aspx

➤ April Chipman, GISP - OSU Cartography Services

- april.chipman@okstate.edu
- 405-744-3268

➤ Christina Hall - AAPG Datapages

- GISConsortium@aapg.org
- 918-560-2680