

September 2024



ArcGIS Business Analyst Report DIY

<https://arcg.is/1jKyn01>

Dat Nguyen & Steve Oliver



OKLAHOMA

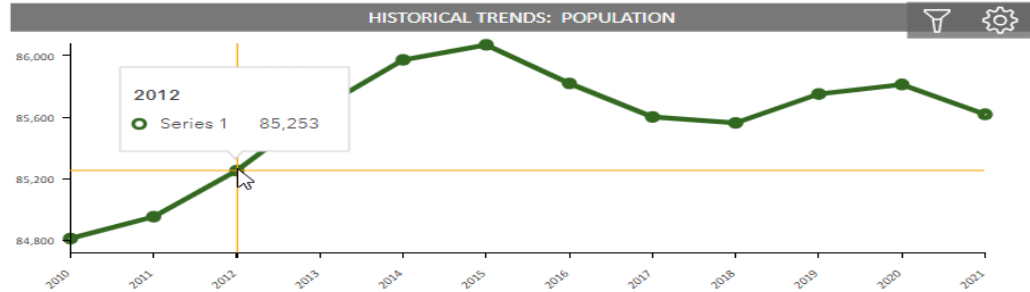
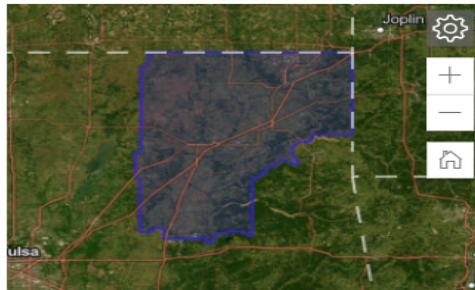
Legislative District Profiles

<https://www.okcommerce.gov/doing-business/data-reports/legislative-district-profiles/>

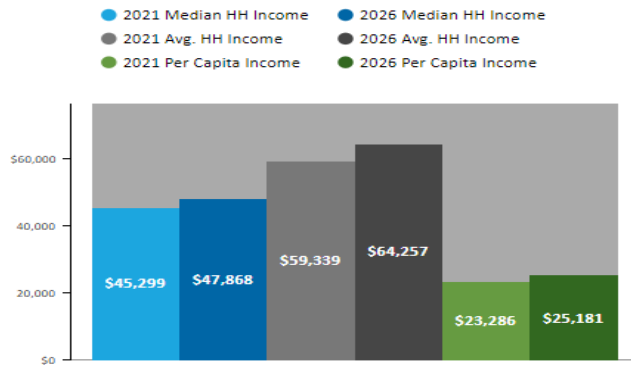


SENATE DISTRICT 1

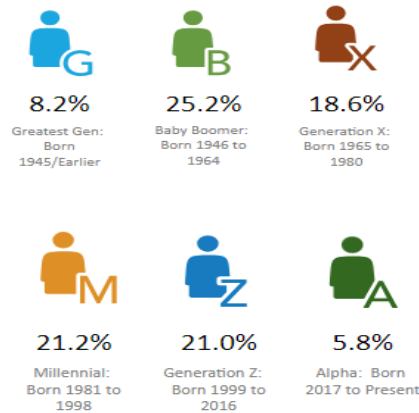
POPULATION TRENDS AND BUSINESS SUMMARY



INCOME INSIGHTS



POPULATION BY GENERATION



2020 BUSINESS SUMMARY

2021 Total Businesses	3,067
2021 Total Employees	32,186
2021 Total Sales (\$000)	\$3,990,664

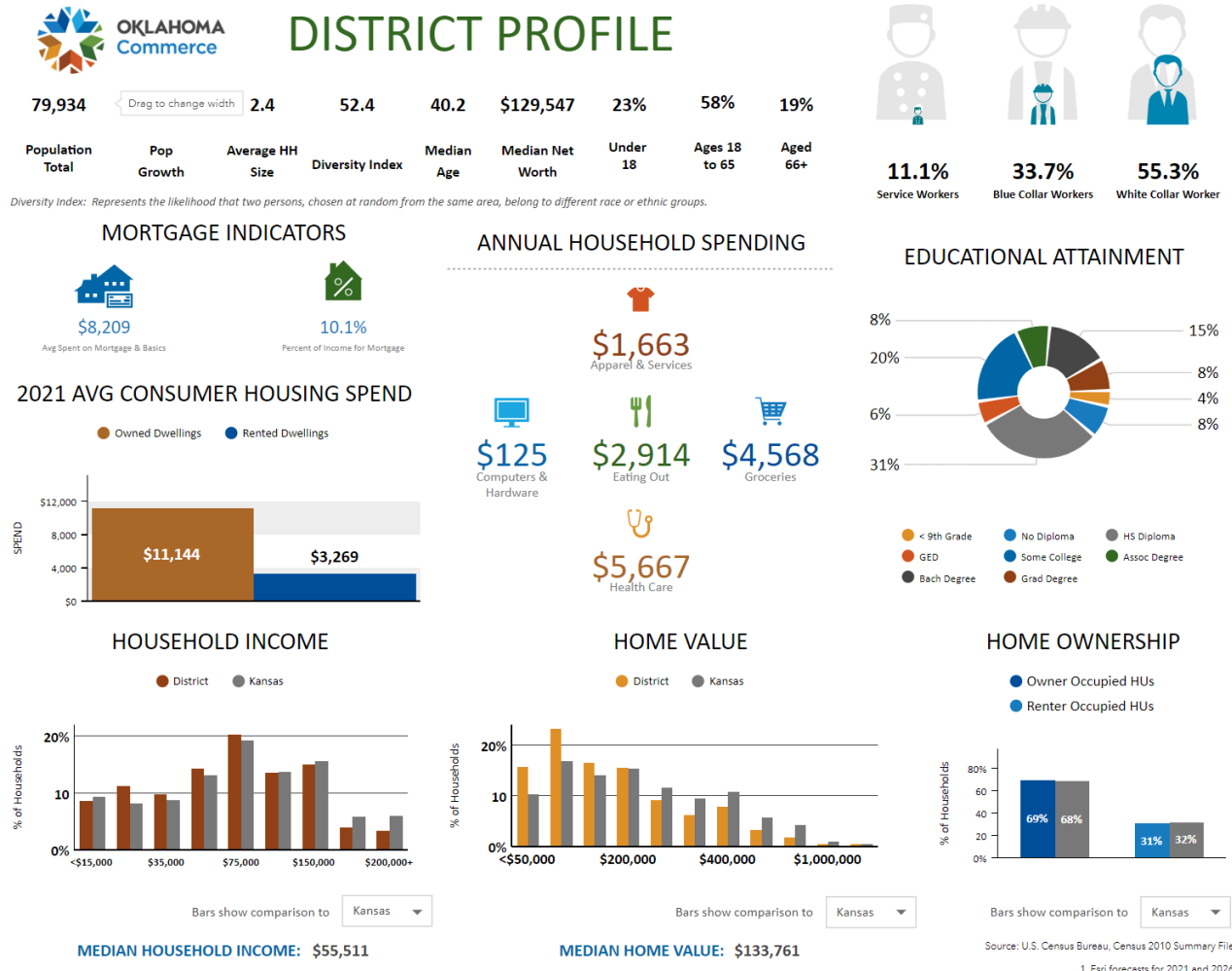
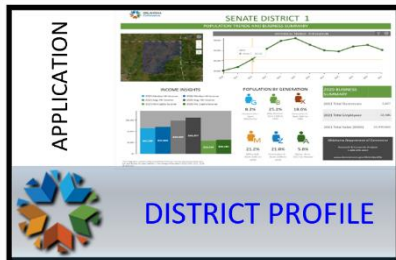
Oklahoma Department of Commerce

Research & Economic Analysis
1-800-879-6552

www.okcommerce.gov/districtprofile

This infographic contains data provided by American Community Survey (ACS), Esri, Esri and Bureau of Labor Statistics. The vintage of the data is 2015-2019, 2021, 2026.
© 2021 Esri

Business Analyst DIY - Mission Impossible?



ArcGIS Online Business Analyst Cost -1

<https://www.esri.com/en-us/arcgis/products/arcgis-business-analyst/buy?srsId=AfmBOoqKIfNFBosOO3Jso6FS1kJ5b34aN-iFPueaDIUYZ-etXSuogU0n>

ArcGIS Business Analyst

Overview

Data and Infographics

Applications ▾

Resources

Downloads

Free Trial

Sign In

Pricing



ArcGIS Business Analyst Standard Bundle

Qty

\$1,100/yr

- Market intelligence in the cloud
- Create beautiful maps and professional reports
- A streamlined experience with easy-to-use business analytics tools

Add to cart

[View description](#) ▾ [Compare](#) ☑



ArcGIS Business Analyst Advanced Bundle

\$5,000/yr

- Set of web, mobile, and desktop location-based analytics tools
- Advanced tools for visualizing demographic data
- Access global data in 135+ countries with more than 15,000 variables

Add to cart

[Hide description](#) ^ [Compare](#) ☑

From site selection for real estate to shelter locations for emergency response, ArcGIS Business Analyst helps all organizations regardless of size, including state and local governments, identify areas for analysis based on circumstances critical to their industries. Users analyze areas of interest using Esri Demographics alongside their own data and interpret the results in a spatial context, run market analysis, and generate beautiful maps. Then, users present their findings with custom reports, stunning infographics, and map-based stories that showcase their analysis.

The ArcGIS Business Analyst Advanced Bundle includes everything in the Standard Bundle plus additional spatial analysis tools, including drive time,

What's included:

- ArcGIS Business Analyst Web App Advanced software license
- [ArcGIS Business Analyst Mobile App](#)
- [ArcGIS Business Analyst Pro](#)
- [Creator user type](#)
- 6,000 credits—These credits allow you to create stunning reports and beautiful infographics, access and use Esri Data, and run demographic analysis.
- **Note:** This bundle does not include downloadable data

ArcGIS Online Business Analyst Cost -2

https://doc.arcgis.com/en/business-analyst/web/about.htm#ESRI_SECTION1_E79EF4AB549E4E9E9A27B03BF1FE65DB

Create drive times or walk times	In Find location, Import file, Web maps and layers, Setup layer workflows.	0.5 credits per drive time or walk time. For example, to create a 5-minute and 10-minute drive time around 10 points, the result is $(0.5 \times 2) \times 10 = 10$ credits used.
Comparison reports	Export to Excel.	10 credits per 1,000 attributes (data variables multiplied by total feature records—that is, 10 variables * 10 sites * 3 study areas = 300 attributes).
	Run comparison reports.	10 credits per 1,000 GeoEnrichment requests.
Suitability analysis	Export to Excel or save as layer.	10 credits per 1,000 attributes (data variables multiplied by total feature records—that is, 10 variables * 10 sites * 3 study areas = 300 attributes).
	Point layer options: Walk time and drive time calculation for the distance to the nearest point.	0.5 credits per 1,000 input origin and destination pairs.
	View, pan, and zoom using standard geographies or hexagons.	10 credits per 1,000 map requests (view, pan, and zoom) using standard geographies or hexagons.
	Export to PDF.	10 credits.

ArcGIS Online Business Analyst Cost - 3

https://doc.arcgis.com/en/business-analyst/web/about.htm#ESRI_SECTION1_E79EF4AB549E4E9E9A27B03BF1FE65DB

	A	B	C	D
1	ZipSite	2024TotalEmployees	2024TotalBusinesses	2024TotalSales
2	73660	83	15	\$5,405,432
3	74352	1,167	172	\$116,569,052
4	74534	8	1	\$111,043
5	74820	17,954	1,550	\$2,705,219,188
6	74878	216	37	\$9,649,592
7	74106	5,258	438	\$614,944,771
8	74540			
9	74942			
10	73762			
11	73746			
12	73565	682	x	3 = 2046 attributes
13	74523			
14	73532			
15	73659			
16	73032			
17	74563			
18	73071	20,205	909	\$1,741,008,276
19	73132	11,273	1,006	\$1,689,344,795

2024 BUSINESS SUMMARY				
Senate District	Senator Name	2024 Total Businesses	2024 Total Employees	2024 Total Sales
1	Eddy Dempsey	3,396	37,721	4,812,303,285
2	Jim Olsen	2,419	25,532	4,559,582,686
3	Rick West	3,773	34,439	4,232,281,156
4	Bob Ed Culver	3,154	28,981	3,071,827,357
5	Josh West	3,094	31,323	5,005,272,279
6	Rusty Cornwell	3,192	33,252	4,327,077,455
Oklahoma Department of Commerce Research & Economic Analysis 1-800-879-6552 https://www.okcommerce.gov/districtprofile				

Only 20 credits

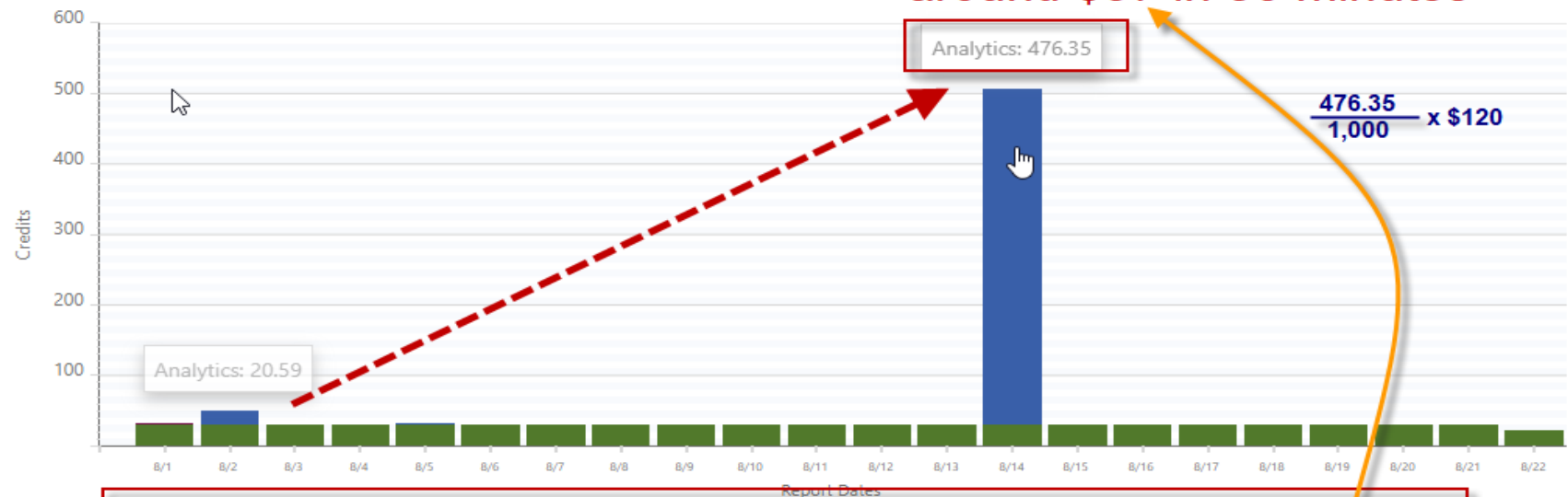
ArcGIS Online Business Analyst Cost - 4

<https://www.esri.com/en-us/arcgis/products/credits/usage#accordion-1-7>

630.60 Storage	498.73 Analytics	2.21 Subscriber Content	0.00 Published Content
-------------------	---------------------	----------------------------	---------------------------

Usage Aggregation by Time

Use the date range selectors above or select a chart column to update the report dates



Credits

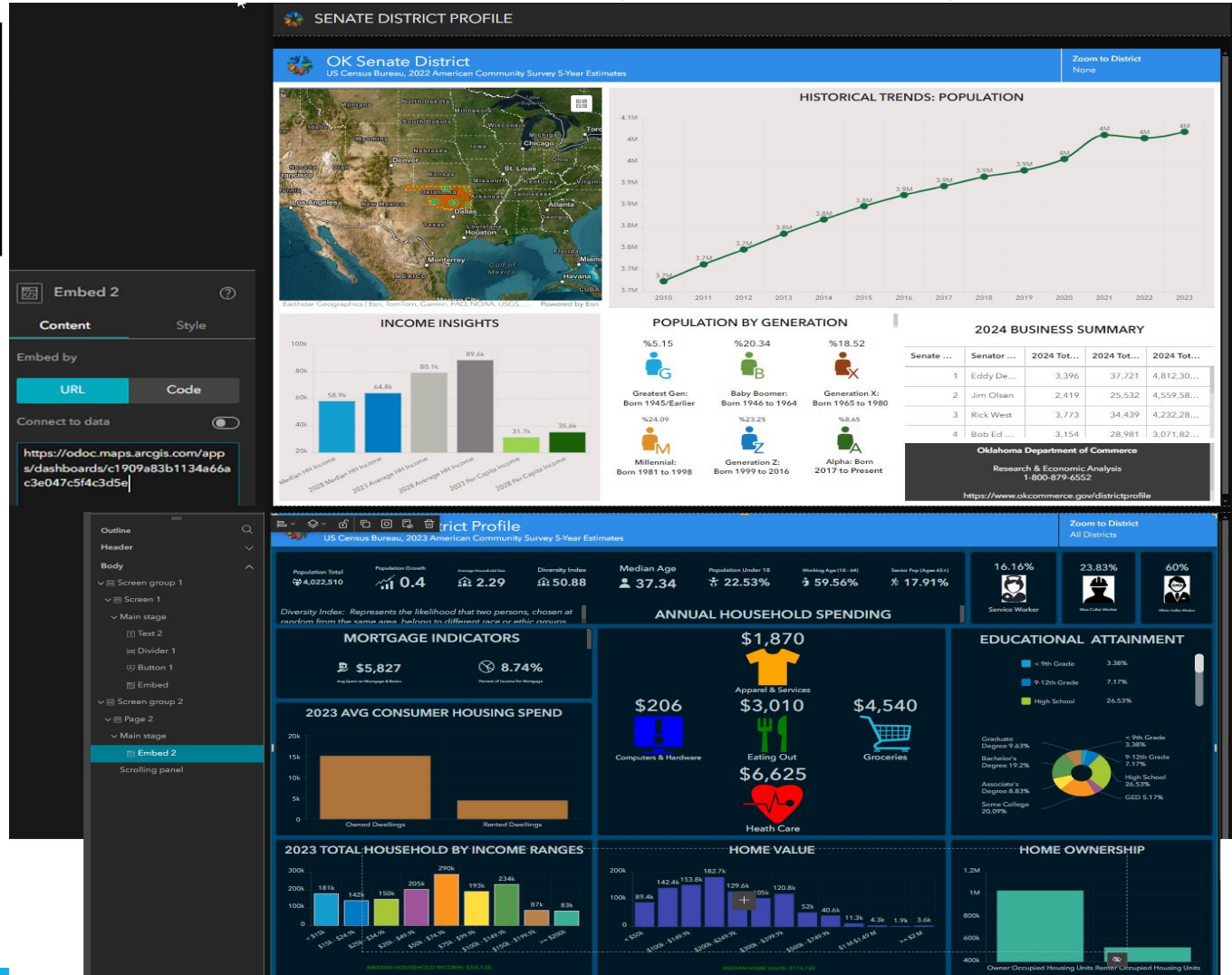
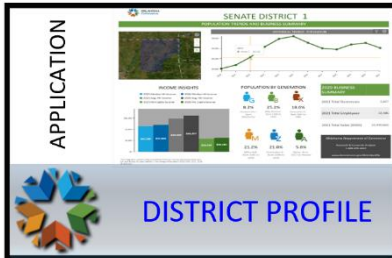
- Use credits to execute various workflows
- Purchase credits in blocks of 1,000
- Use credits within 24 months

Qty - 1 +

\$120

Add to cart

Demographic Profile: Experience Builder + Dashboard (3 are done)



Demographic Profile: Database is the key! (1)



<https://openai.com/chatgpt/>

1. Online Business Directories

Websites like Yelp, Google Maps, and Yellow Pages can be used to search for businesses by ZIP code. You can:

- **Search in Bulk:** Some directories allow you to search for businesses in bulk by entering a ZIP code and then reviewing the number of results.
- **Use Advanced Search:** Some platforms offer advanced search features where you can filter results by ZIP code.

2. Government Databases

Local or national government databases can provide comprehensive business data:

- **US Census Bureau:** The Census Bureau provides business data through various reports, such as the Economic Census.
- **Small Business Administration (SBA):** The SBA sometimes provides data and resources about businesses by region.


3. Commercial Data Providers

Companies like Dun & Bradstreet, InfoGroup, and Hoovers offer business databases and can provide detailed information by ZIP code:

- **Purchase Reports:** These services often sell detailed business lists by ZIP code.
- **Custom Queries:** Some services allow you to run custom queries to find businesses in specific ZIP codes.

4. Local Chamber of Commerce

Local chambers often maintain databases of businesses in their area:

- **Contact Chambers:** Reach out to the chamber of commerce in the ZIP code area for business information.
- **Online Resources:** Check their websites;  chambers have business directories available

Demographic Profile: Database is the key! (2) Census vs Lightcast



<https://cbb.census.gov/cbb/#view=map&industries=00&clusterName=Custom+Industries&geoType=state&dataVariable=179&dashboardVars=15-17-33-64¢erX=-10802692¢erY=4568679&level=4&theme=default&dynHeader=Custom+Region>

Census Business Builder has business database to County level only
Lightcast has too many job categories for summarize



The Lightcast logo, featuring a red stylized 'L' icon and the word "Lightcast".

Reports ▾ Groups ▾ Support ▾

Home > Occupation > Occupation Table

Start Over

All Occupations [Advanced](#)
No limit. Showing all available.

751 ZIPs [Advanced](#) • [Clear](#) • [Save](#)
✖ Vian, OK (in Sequoyia county) (74902)
✖ Watson, OK (in McCurtain county) (74...
✖ Watts, OK (in Adair county) (74964)
✖ Westville, OK (in Adair county) (74965)
✖ Wister, OK (in Le Flore county) (74966)

Custom Industries
All Sectors

X

STATE METRO **COUNTY** CITY/TOWN ZIP CODE TRACT

Occupation Table

All Occupations in 751 Oklahoma ZIPs

5-Digit ▾ Filter ▾ Keep Hide Jump To ▾ [+ Create Group](#)

<input type="checkbox"/>	SOC ^	Description
<input type="checkbox"/>	11-1011	Chief Executives
<input type="checkbox"/>	11-1021	General and Operations Managers
<input type="checkbox"/>	11-1031	Legislators

Demographic Profile: Database is the key! (3)



11.1%

Service Workers

33.7%

Blue Collar Workers

55.3%

White Collar Worker

How are the percentages of White Collar, Blue Collar, and Services employment categories defined and calculated?

Esri current-year occupation distribution covers 22 broad occupations. The following occupations are divided into three categories: White Collar, Services, and Blue Collar. Each of the three employment classifications is expressed as a percentage of the Employed Civilian Population Age 16+.

White Collar

Management/Business/Financial

MANAGEMENT OCCUPATIONS, INCLUDING FARMERS AND FARM MANAGERS

BUSINESS AND FINANCIAL OPERATIONS OCCUPATIONS

Professional

Services

HEALTHCARE SUPPORT OCCUPATIONS

PROTECTIVE SERVICE OCCUPATIONS

FOOD PREPARATION AND SERVING RELATED OCCUPATIONS

BUILDING AND GROUNDS CLEANING AND MAINTENANCE OCCUPATIONS

PERSONAL CARE AND SERVICE OCCUPATIONS

Blue Collar

Calculate Field

This tool modifies the Input Table

Parameters Environments Properties

Input Table
Senates_DistrictProfile2024ALL

Field Name (Existing or New)
Service Worker

Expression Type
Python

Expression

Fields

- Sum Occupation: Office_Administrative Support
- Sum Occupation: Sales and Sales Related
- Sum Occupation: Personal Care_Service
- Sum Occupation: Building_Grounds Cleaning_Maintenance
- Sum Occupation: Food Preparation_Serving Related
- Sum Occupation: Protective Service
- Sum Occupation: Healthcare Support
- Sum Occupation: Healthcare Practitioner_Technician

Insert Values

ServiceWorker =

!sum_Occupation_Healthcare_Support!+!sum_Occupation_Protective_Service!+!sum_Occupation_Food_Preparation_Serving_Related!+!
sum_Occupation_Building_Grounds_Cleaning_Maintenance!+!sum_Occupation_Personal_Care_Service!

OCCUPATIONS
IONS

IS
OCCUPATIONS

S

S

Database is the key! (4)

Using Model for getting needed numbers (re-used later by next year.)

Model

Your Polygons

Houses_DistrictProfile2023

Download Database to Summarize Within

PTS_ZipcodeIncomeHousingSpendingOccupationCrime

Summarize Within

House_DistrictPr...

Summarize Within

Parameters Environments Properties

Input Polygons
Houses_DistrictProfile2023:1

Input Summary Features
PTS_ZipcodeIncomeHousingSpendingOccupationCrime

Output Feature Class
House_DistrictProfile2024ALL

☒ Keep all input polygons

Summary Fields

Field	Statistic
Apparel & Services (Avg)	Mean
Meals at Restaurants_O	Mean
Food (Avg)	Mean
Health Care (Avg)	Mean
Computers & Hardware	Mean
Rented Dwellings (Avg)	Mean
Owned Dwellings (Avg)	Mean
Mortgage Interest (Avg)	Mean
Total Daytime Populatic	Sum
Daytime Population De	Mean
Employed Civilian Popu	Sum
Occupation: Transporta	Sum

Senates_DistrictProfile2024ALL

GlobalID *	Senator Name	2024 Total Businesses	2024 Total Employees	2024 Total
{CB0479CD-A717-47A9-B145-A026CD93814F}	Eddy Dempsey	3396	37721	481230
{5C41D829-6764-4899-B536-BD626EA400E6}	Judd Strom	4437	46818	927024
{D37C841A-F01B-4A9A-9173-E886CAD02B4E}	John Kane	3463	53233	884436
{E28F0CCF-EC70-42FA-93F0-C7DB30B3CAC4}	Kevin McDugle	2322	24924	373175
{591527B8-B87B-45EF-B1A8-C2CC85193A7C}	Neil Hays	3624	37601	692717
{49B600FF-CD04-4DC1-B0C3-640858588ADA}	Chris Sneed	3841	39739	743678
{ADFCB485-50F5-405F-B98C-FED3794DCB03}	Randy Randleman	4890		
{C81A58C3-07B4-49FA-84D8-0C62275A9FF8}	Scott Fetgatter	1101		
{36905B71-F2E9-4314-B0BB-C8ABF09C47C4}	Jim Grego	2802		
{8DAD3704-1455-463D-A3AA-5E3391561632}	David Smith	4080		
{175DFB00-3F00-478F-BEAF-208A023A2001}	Justin J.J. Humphrey	3616		
{D66A8290-9E14-41D2-A644-DBA320FBE0CE}	Jim Olsen	2419		
{B11B523C-C170-44D2-BF60-AB97BFC64843}	Sherrie Conley	2402		
{079759E1-547A-401E-9610-164DE06EFF18}	Cody Maynard	3418		
{52681019-9289-4EE8-8488-C956BB0F6470}	Charles McCall	2938		
{D66959E8-D8FA-4D7B-8B26-1F6DBDA402D7}	Terry O'Donnell	2332		
{D59CC326-2CBA-49C8-BF9B-B57E7E489458}	Chris Banning	2999		
{5C0B5812-6B54-4777-93E8-61F81B74E44B}	Ronny Johns	3500		
{00E0C5EB-AAE1-4E81-91B2-9C8A353AB1B2}	Dell Kerbs	3830		
{C21BB04E-30D9-4917-A708-C840AF82EE1A}	Danny Sterling	4376		
{216E31D3-CF91-4280-B69F-C8DCCFC31E0A}	Danny Williams	2233		

Wealth Index

Apparel & Services (Avg)

Meals at Restaurants_Other (Avg)

Food (Avg)

Health Care (Avg)

Computers & Hardware for Home Use (Avg)

Rented Dwellings (Avg)

Owned Dwellings (Avg)

Mortgage Interest (Avg)

Total Daytime Population

Daytime Population Density (Pop per Square Mile)

Employed Civilian Population Age 16+

Occupation: Transportation_Material Moving

Occupation: Production

OK

767029	228679.177419
430393	221988.809524

ArcGIS Dashboard: Nuts and Bolts -1



Fun playing with dashboard more often to learn more. Send me an email if you have any specific questions to dat.nguyen@okcommerce.gov

Icons – Adobe Photoshop

SVG – SVG Code Editor <https://editsvgcode.com/>

Indicator

Data

< Select an icon

Indicator

Solutions

General

Points of interest

Accessibility

Hub

Miscellaneous

Custom

SVG code

```
<svg version="1.1" id="Layer_1"
xmlns="http://www.w3.org/2000/svg"
...

```

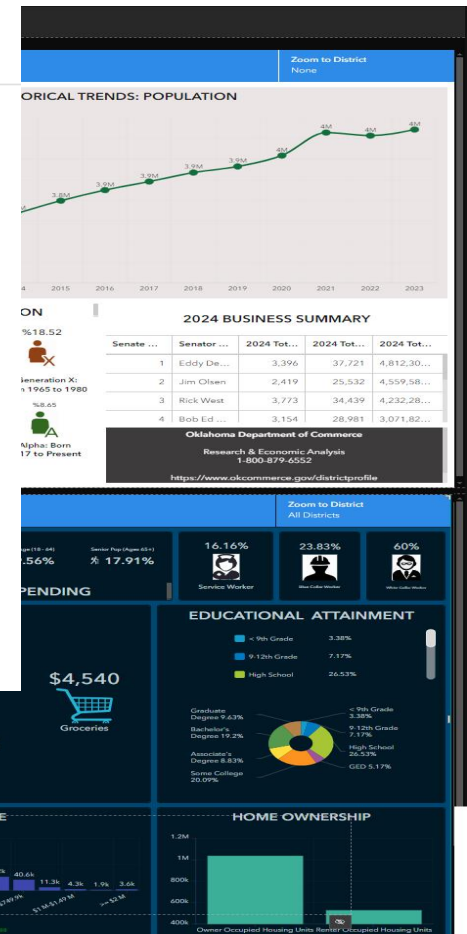
Use a custom icon, logo, or image by entering an SVG here.

2.06014



Apparel & Services

copy/paste the svg code here



ArcGIS Dashboard: Nuts and Bolts -2



- Other application has duplicate, but COPY Dashboard – new#id =
- **ArcGIS Online Assistant** - Switching Basemap
<https://odoc.maps.arcgis.com/apps/mapviewer/index.html?webmap=a96104debcc748fd90488ae7988a2b93>
- NotePad++ for replacing map ids

The screenshot shows the ArcGIS Online Assistant web application. The header includes the title "ArcGIS Online Assistant", a search bar "Search My Content", and a dropdown "I want to...". Below the header, the URL "Oklahoma Commerce - https://ODOC.maps.arcgis.com/" and the user "Current User: Dat Nguyen (dat.nguyen)" are displayed. On the left, there are two blue buttons: "Root" and "Apps". The main content area shows a JSON configuration for a map viewer. A Notepad++ window is open over the JSON, displaying a "Replace" dialog box. The dialog box has tabs for "Find", "Replace", "Find in Files", "Find in Projects", and "Mark". The "Find" tab is active, showing "Find what:" as "a96104debcc748fd90488ae7988a2b93" and "Replace with:" as "f72af523eb6a4bd99871e93bbc173d26". The "Replace" tab is also visible, showing "Replace", "Replace All", and "Replace All in All Opened Documents" buttons. The "Find" tab also includes options for "In selection", "Backward direction", "Match whole word only", "Match case", "Wrap around", "Search Mode" (Normal, Extended, Regular expression), and "Transparency" (On losing focus, Always).

ArcGIS Online Assistant

Search My Content

I want to...

Copy Content

Oklahoma Commerce - <https://ODOC.maps.arcgis.com/>

Current User: Dat Nguyen (dat.nguyen)

Root

Apps

```
{
  "fieldMap": [
    {
      "sourceName": "District_1",
      "targetName": "DISTRICT"
    }
  ],
  "targetId": "c98...",
  "by": "whereClause",
  "requiresSelection": true,
  "fieldMap": [
    {
      "sourceName": "District_1",
      "targetName": "DISTRICT"
    }
  ],
  "targetId": "99b...",
  "by": "whereClause",
  "requiresSelection": true,
  "fieldMap": [
    {
      "sourceName": "District_1",
      "targetName": "DISTRICT"
    }
  ],
  "targetId": "fe035acc-674b-443c-ae8a-e8b7c79d35a2#main",
  "by": "whereClause",
  "requiresSelection": false,
  "fieldMap": [
    {
      "sourceName": "District_1",
      "targetName": "DISTRICT"
    }
  ]
}
```

Replace

Find

Find what: a96104debcc748fd90488ae7988a2b93

Replace with: f72af523eb6a4bd99871e93bbc173d26

Find Next

Replace

Replace All

Replace All in All Opened Documents

Close

Backward direction

Match whole word only

Match case

Wrap around

Search Mode

Normal

Extended (\n, \r, \t, \0, \x...)

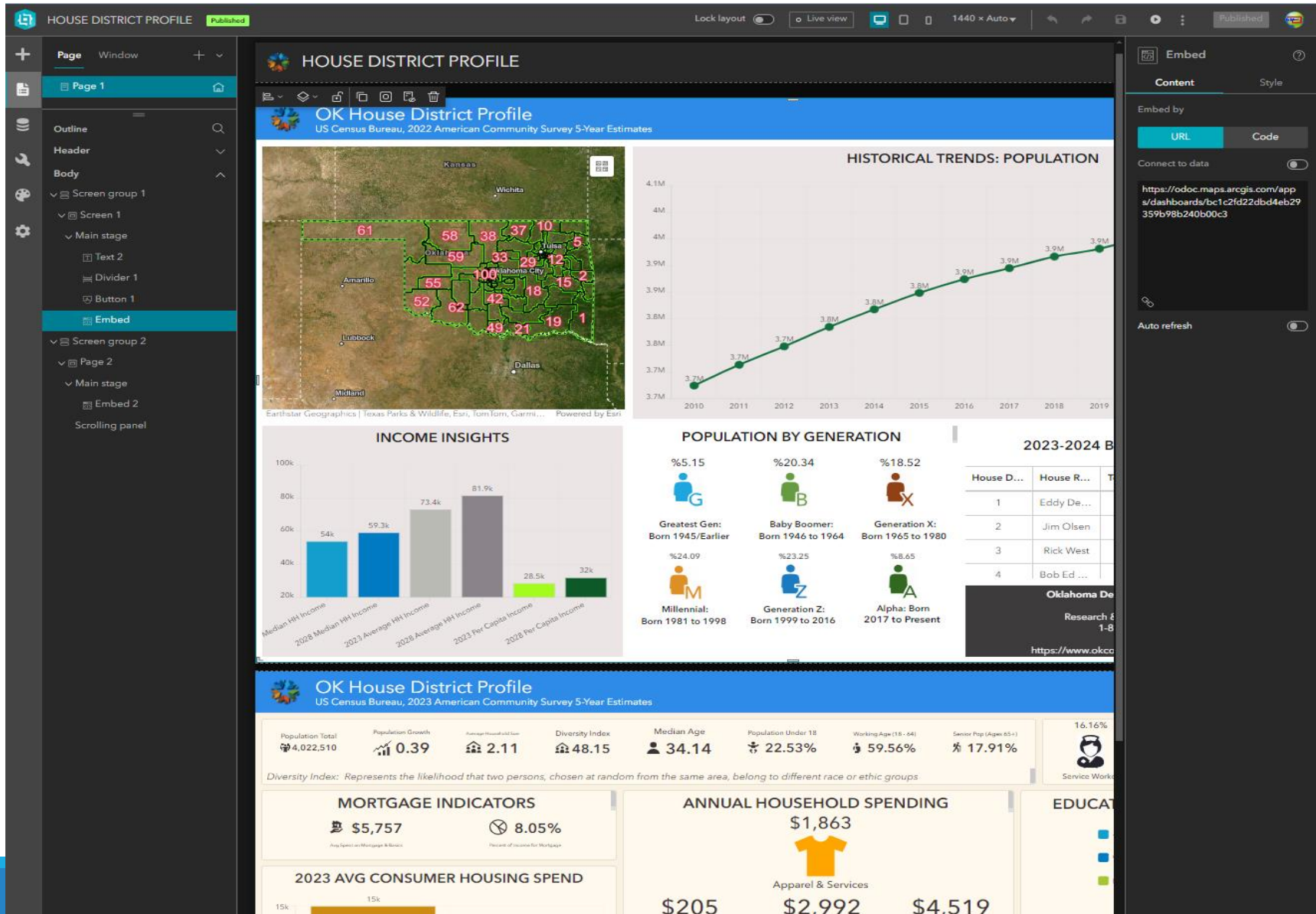
Regular expression

Transparency

On losing focus

Always

Business Analyst Report = Experience Builder + Dashboards



Business Analyst Report DIY – 2nd Method

= Just ArcGIS Pro Layout



1. Copy Esri Business Analyst image
2. Edit to remove Texts
3. Insert to Layout as background image
4. Populated dynamic attributes texts based on your database (layers)
5. Don't forget to credits Esri for their design, and all database sources.



OTC has the database!

How Tax Commission collecting business database?



All data collected by the
Oklahoma Tax Commission
is voluntarily given and is
protected by IRS
Guidelines

Database is the key!

How Tax Commission collecting business database?



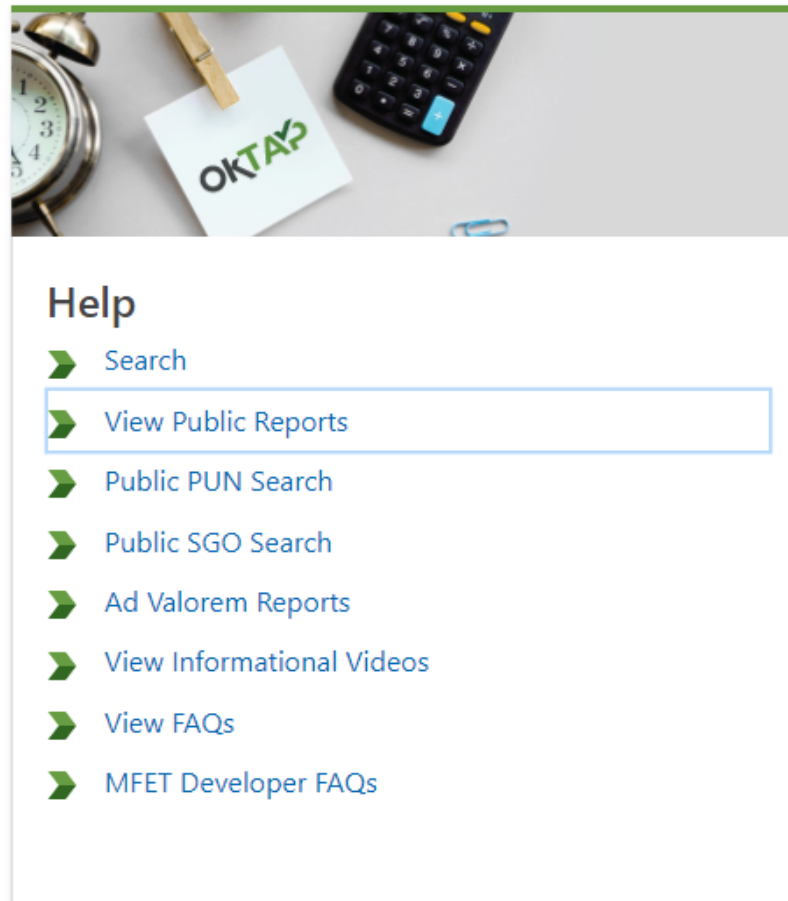
Sales Tax: City and County and Use Tax: City and County, are publicly available on the Oklahoma Tax Commission website under Reports. This is available for the previous month.

The Sales Tax: City and County and Use Tax: City and County, can be obtained from the Oklahoma Tax Commission from the following sights

[https://oktap.tax.ok.gov/oktap/web/ /](https://oktap.tax.ok.gov/oktap/web/)

Database is the key!

How Tax Commission collecting business database?



Database is the key!

How Tax Commission collecting business database?



Reports

Reports Available to the Public

- ➡ County Taxes and Licenses
- ➡ Daily Report of Taxes Collected
- ➡ Deposit Letters
- ➡ Ledger Reports
- ➡ Tax by NAICS Report
- ➡ Grant Organizations Report
- ➡ Rural Electric by Co-Op
- ➡ Quality Jobs Incentive Rebates
- ➡ Rural Electric to Schools
- ➡ PUN Filing History
- ➡ Gross Production Company Lookup
- ➡ School Apportionment By County
- ➡ School Apportionment By District 2
- ➡ School Apportionment By District
- ➡ State Entity Apportionment Letters
- ➡ Income Tax Credit Summary Report
- ➡ Taxes and Licenses County Distribution
- ➡ Year-To-Date Gas Excise
- ➡ Year-To-Date 911 Fee
- ➡ Year-To-Date Prepaid Wireless Fee
- ➡ Year-To-Date Tobacco/Cigarette Tax
- ➡ Archived Data

- County Taxes and Licenses
- Daily Report of Taxes Collected
- Deposit Letter Reports
- Ledger Reports
- Tax by NAICS Report
- Grant Organizations Report (EIGO/SGO/PSF/PSD)
- Rural Electric Apportionment to Schools by Co-Op
- Quality Jobs Incentive Rebates
- Rural Electric Apportionment to Schools by School
- PUN Filing History
- Listing of Gross Production Companies by Bond Types and Account Status
- School Apportionment By County With Year-To-Date
- School Apportionment By District 2
- School Apportionment By District
- State Entity Apportionment Letters
- Income Tax Credit Summary Report
- County Taxes and Licenses Distributed to Counties
- Year-To-Date Gas Excise
- Year-To-Date 911 Fee
- Year-To-Date Prepaid Wireless Fee
- Year-To-Date Tobacco/Cigarette Tax
- View Archived Reports - Reports older than 3 years

Database is the key!

How Tax Commission collecting business database?



< Public Reports

Taxes and Licenses Apportioned to Counties

- Choose a year and month, and click 'Search'.
- Results include all counties. To display a single county, enter the county COPO.
- The past 3 years of data is available for searching. For data older than 3 years view Archived Data.

Year	2024	▼
Month	08. August	▼
Entity	1188 - Cherokee County	▼
<button>Search</button>		

				Export
Del	Tax Type	Tax ID	Tax Title	Total
Cherokee County				
	AAT	6314	Alcoholic Beverage Tax For Cities & Towns	19,007.51
	GPP	CBRIF	Gross Production Oil - CBRIF	23,881.87
	MFD	1012	Diesel Fuel Excise Tax	33,671.16
	MFD	CBRIF	Diesel Fuel Excise Tax - CBRIF	3,501.09
	MFG	0112	Gasoline Excise Tax	96,114.26
	MFG	CBRIF	Gasoline Excise Tax - CBRIF	7,025.12
	MFS	0412	Special Fuel Tax	10.59
	MFS	CBRIF	Special Fuel Tax - CBRIF	0.90
	MVC	CRF	Motor Vehicle Collections County Road Fund	20,312.62
	MVC	COCT	Motor Vehicle Collections For Cities & Towns	11,704.96
	MVC	COCG	Motor Vehicle Collections For County Govt	6,736.44
	MVC	COR	Motor Vehicle Collections For Roads	56,781.22
	MVC	CIRB	Motor Vehicle Collections For Roads - HB2892	39,787.33
	MVC	CRIR	Motor Vehicle Collections For Roads CRIRF	29,092.48
				347,627.55

Data is updated each business day

Database is the key!

How Tax Commission collecting business database?



A	B	C	D	E	F
	AAT	6314	Alcoholic Beverage Tax For Cities & Towns	19,007.51	
	GPP	CBRIF	Gross Production Oil - CBRIF	23,881.87	
	MFD	1012	Diesel Fuel Excise Tax	33,671.16	
	MFD	CBRIF	Diesel Fuel Excise Tax - CBRIF	3,501.09	
	MFG	112	Gasoline Excise Tax	96,114.26	
	MFG	CBRIF	Gasoline Excise Tax - CBRIF	7,025.12	
	MFS	412	Special Fuel Tax	10.59	
	MFS	CBRIF	Special Fuel Tax - CBRIF	0.9	
	MVC	CRF	Motor Vehicle Collections County Road Fund	20,312.62	
	MVC	COCT	Motor Vehicle Collections For Cities & Towns	11,704.96	
	MVC	COCG	Motor Vehicle Collections For County Govt	6,736.44	
	MVC	COR	Motor Vehicle Collections For Roads	56,781.22	
	MVC	CIRB	Motor Vehicle Collections For Roads - HB2892	39,787.33	
	MVC	CRIR	Motor Vehicle Collections For Roads CRIRF	29,092.48	

Thank you!

Q & A

Dat Nguyen | Research Specialist

Oklahoma Department of Commerce – Research & Economic Analysis Services
900 N Stiles, Oklahoma City, OK 73104
Office: 405-815-5121, Cell: 832-692-9935, Fax: 405-815-5109



OKLAHOMA
Commerce



Steve Oliver

Municipal Boundary Coordinator,
Ad Valorem Division
405.319.8204

steve.oliver@tax.ok.gov | tax.ok.gov

Oklahoma Tax Commission | OKC, OK | 73194



OKLAHOMA